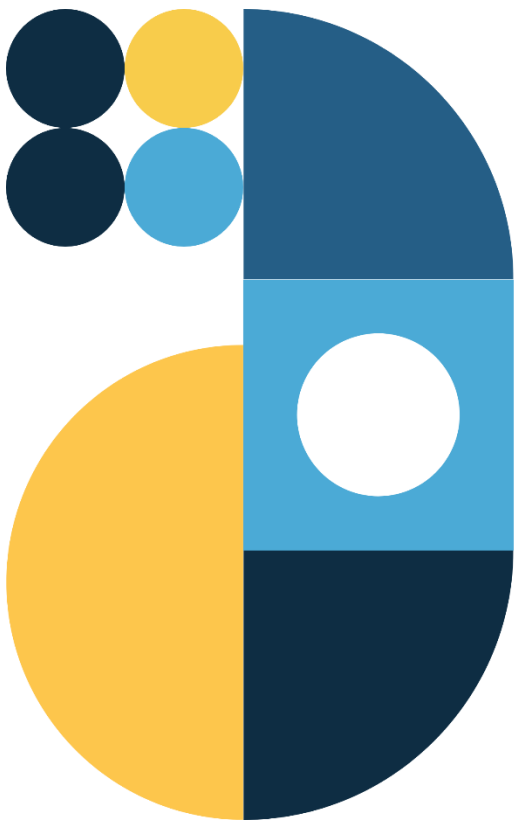




# FAMILY MEMBERSHIPS



ATHLETE GUIDE

# TABLE OF CONTENTS

Change Control: .....	2
Notes and Definitions: .....	3
Purchasing a Membership .....	3
Adding Your Family Members .....	6

## CHANGE CONTROL:

What Changed:	Date of Change:	Changed By:	Document Version:
Initial Creation	April 15, 2023	Boris Fucic	V1

## NOTES AND DEFINITIONS:

For the purposes of this guide, we use Player 1, Player 2, Player 3, Player 4 and Player 5 as Athlete Names. They are used interchangeably to illustrate tool functionality. The screenshots may switch between players to illustrate specific points.

This manual assumes that your club is fully integrated with PlayerCoach and membership purchases are performed through the platform.

It is assumed that each family member has a profile on PlayerCoach and that the profile is connected to your Club.

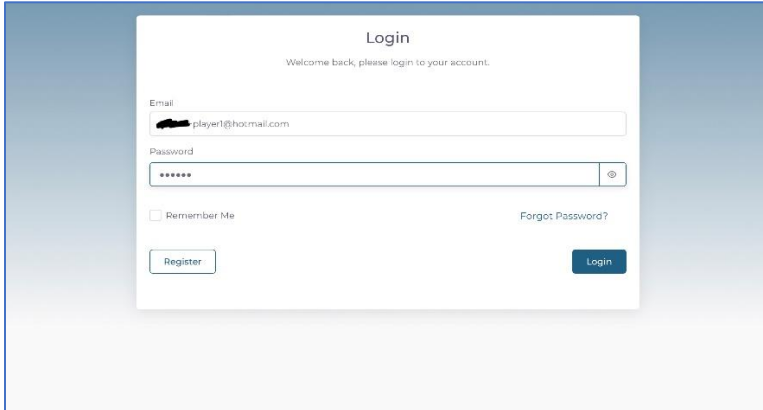
If memberships are purchased outside of the platform, contact your club.

A family membership in this manual consists of the following:

1. 2 Adult Members
2. Unlimited Junior Members

## PURCHASING A MEMBERSHIP

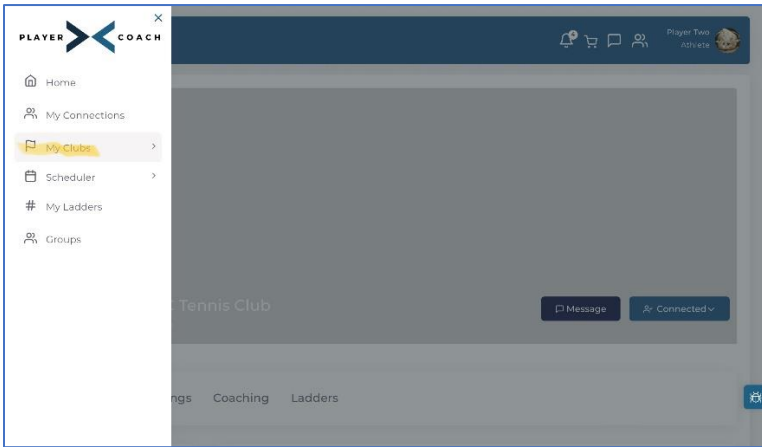
1. Begin by logging in to PlayerCoach



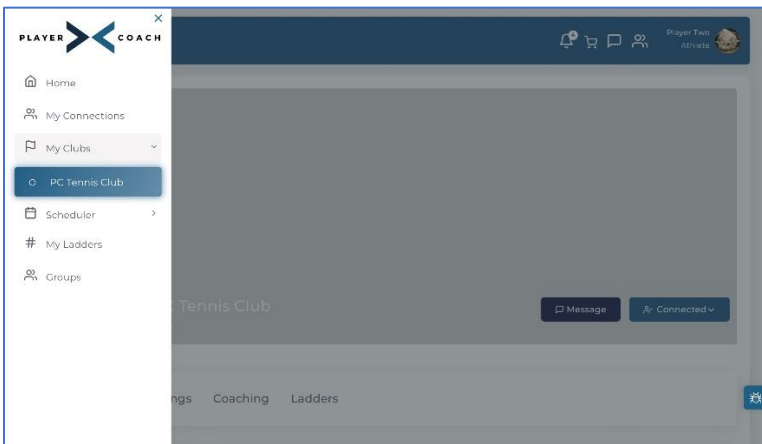
The screenshot shows a login form with the following elements:

- Title: Login
- Message: Welcome back, please login to your account.
- Email field: player1@hotmail.com
- Password field: masked with asterisks
- Remember Me checkbox: unchecked
- Forgot Password? link
- Register button
- Login button

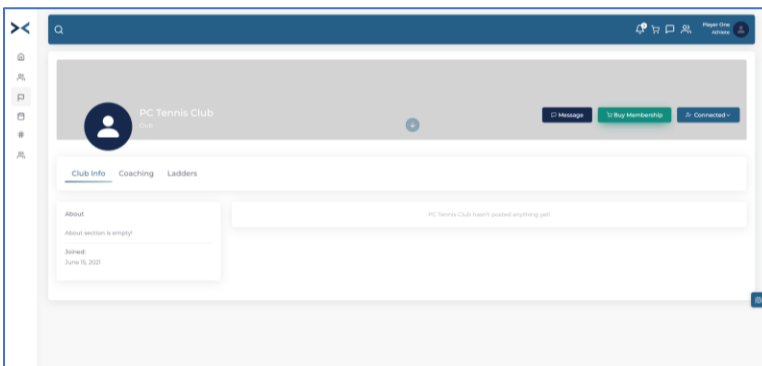
2. Select “My Clubs”



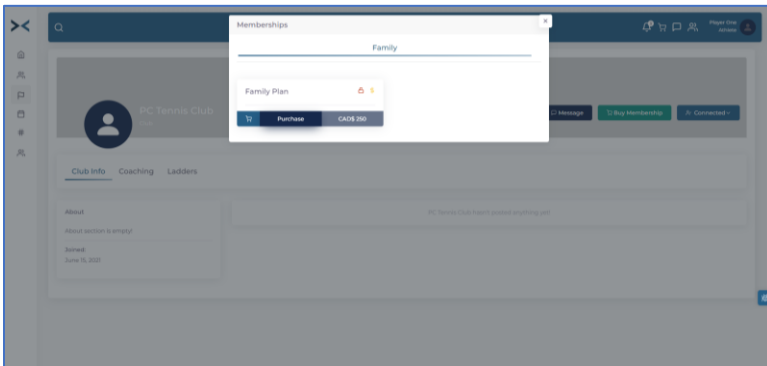
3. Choose your tennis club (i.e. PC Tennis Club)



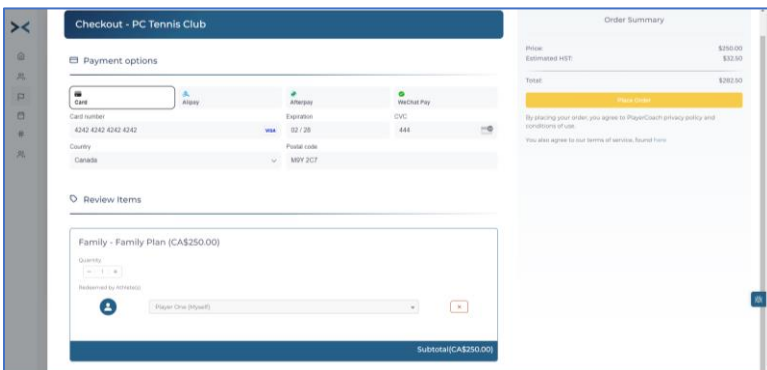
4. Select “Buy Membership”



5. Choose “Purchase”

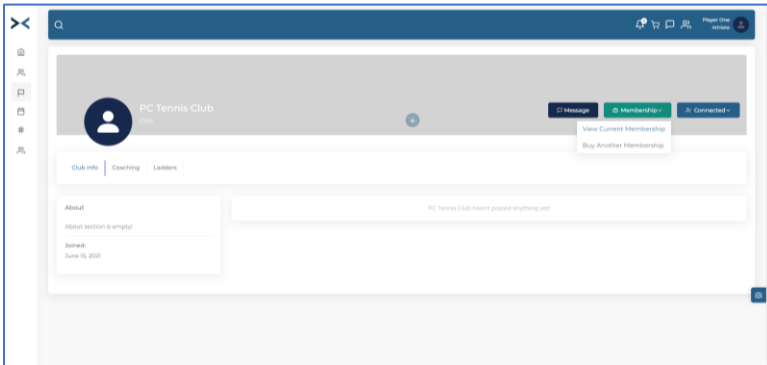


6. Complete the Credit Card Checkout Process

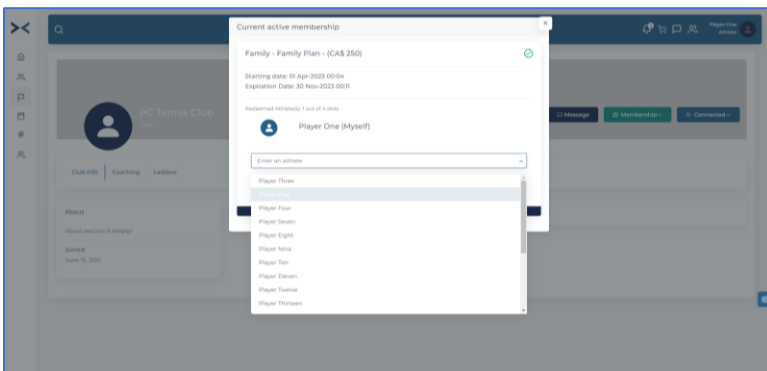


# ADDING YOUR FAMILY MEMBERS

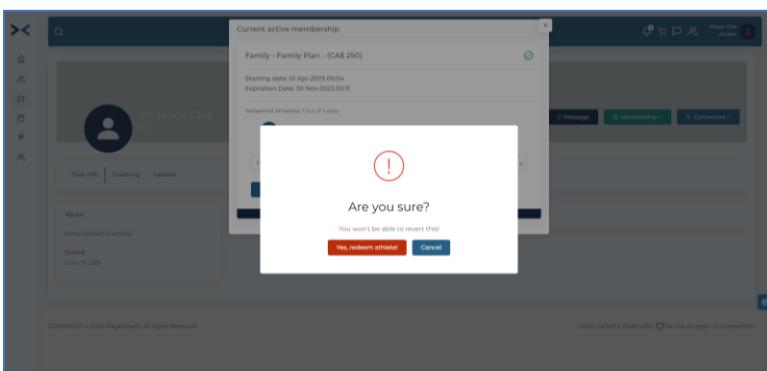
1. Select “View Current Membership”



2. Fill In the “Enter An Athlete” field



3. Confirm the that you wish to redeem the athlete



4. Repeat for as many family members as necessary and allowed by the membership option you have purchased